



# **BILL INDUSTRIES**

---

J-57 & 58 MIDC AMBAD NASHIK - 422 010

# CONTENTS

1. About Us (Slide3)
1. Mission ,Vision & Values (Slide4)
2. What We Do (Slide5)
3. Product Type ( Body Assemblies)  
Bolero Assemblies & Xylo Assemblies (Slide 6 & 7)
4. Tooling (Slide8 & 9)
5. Tooling (Dies & Panel Checkers) (Slide10)
6. Production Facility ( Slide11)
7. Power press (Slide 12 & 13)
8. Technical Specifications of PRESSES (Slide14)
9. Spot Welding Guns & Assembly Fixtures  
(Bolero & Xylo) (Slide 15 & 16)
10. Tool Room Facilities (Slide17 & 18)
11. VMC & WEDM (Slide19)
12. SPM For Machining Press Part  
(ID BORING) (Slide20)
13. SPM for Parting & Facing Operation (Slide21)
14. Our Domain Strength (Slide22)
15. Our Future Projection (Slide23)
16. Major Clients (Slide24)
17. Quality System Adopted (Slide25)
18. Our Management Structure (Slide26)
19. Thank You (Slide27)



## ABOUT US

- Established in 1994, Bill is a partnership firm, administered and managed by senior Family members.
- Prior 1994, we were located at Bhayander, by the name Indian Press Tools working with a force of 10 labours.
- At present we are located at Nasik, Maharashtra working with a force of 300 laborers.
- We develop and produce sheet metal and machined components for the automotive Industry.

# MISSION AND VISION

## MISSION

Mission We work in sync with our customer's success by providing them the required products at a competitive price and punctual time by helping them expand their market share. We, at Bill Industries concentrate on innovation as well as quality as the core provider.

## VISION

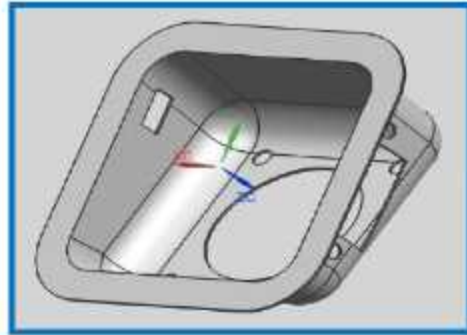
We are working towards being a global player in automotive components market with a world-wide value chain.

## VALUES

- Safety first and Quality must.
- Be Respectful.
- Be Ethical.
- Care for society.

# WHAT WE DO

We are manufacturers of :



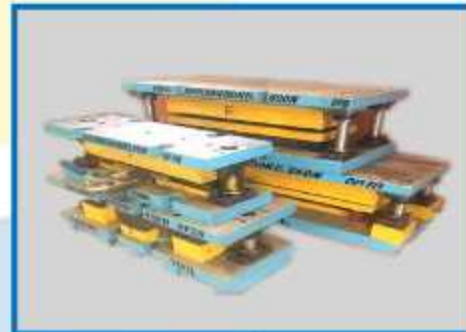
Sheet metal components



Assemblies



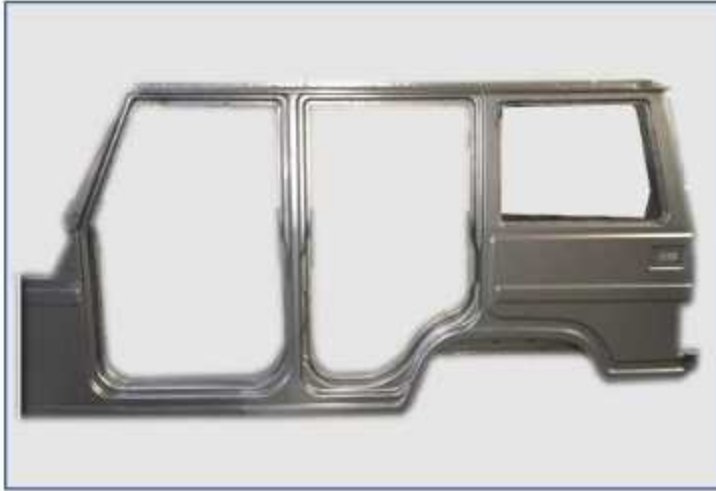
Critical machining  
of Automotive Parts



Development of toolings

# PRODUCT TYPE (BODY ASSEMBLIES)

## BOLERO ASSEMBLIES

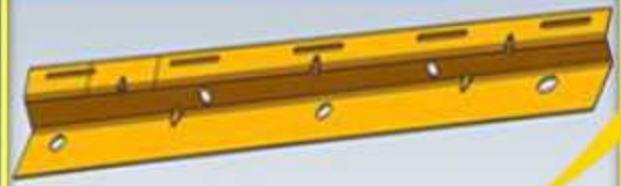
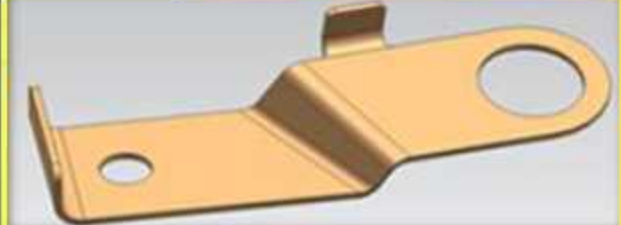
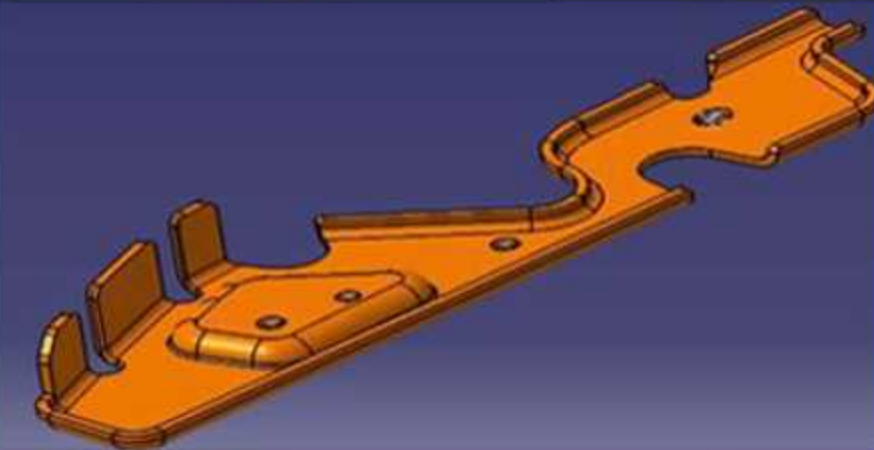
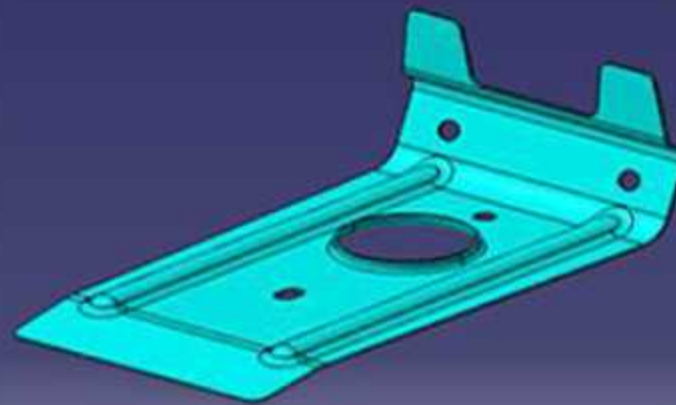
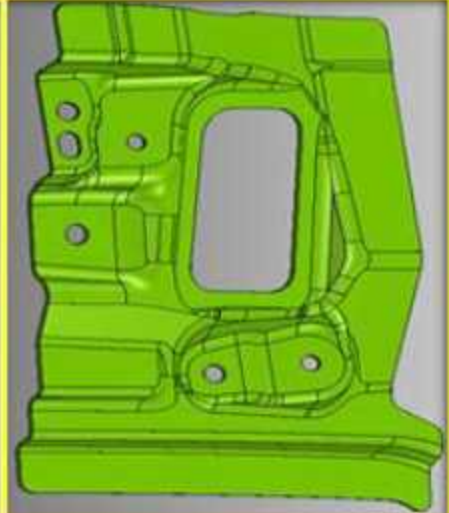
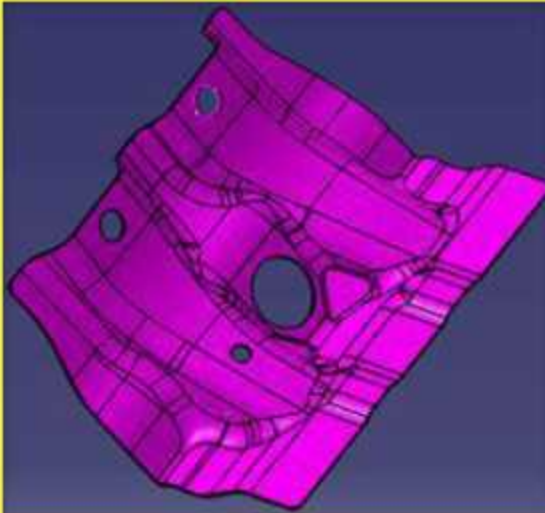
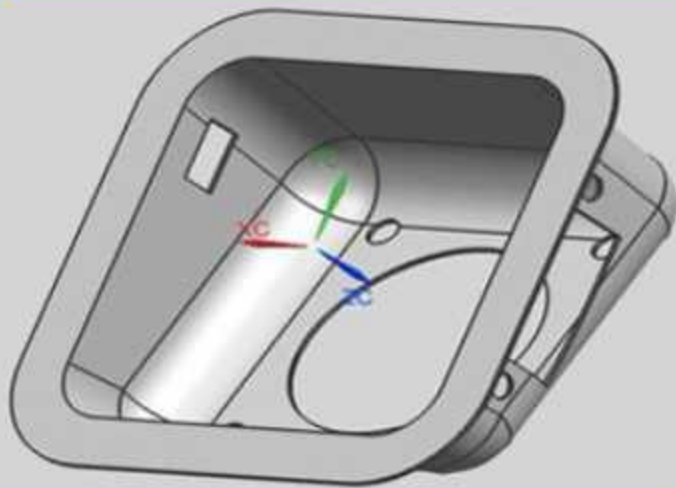


**Bolero Side Body ,  
BackPannel  
& DashPannel  
Assembly**

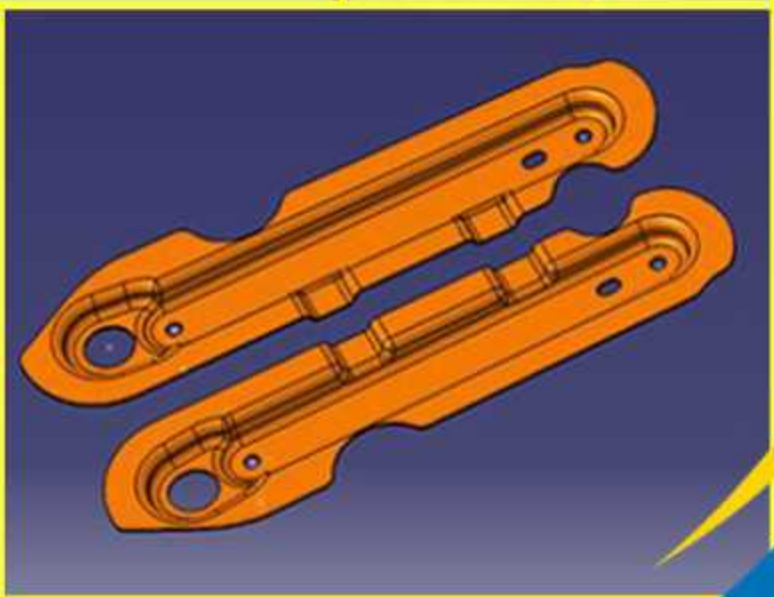
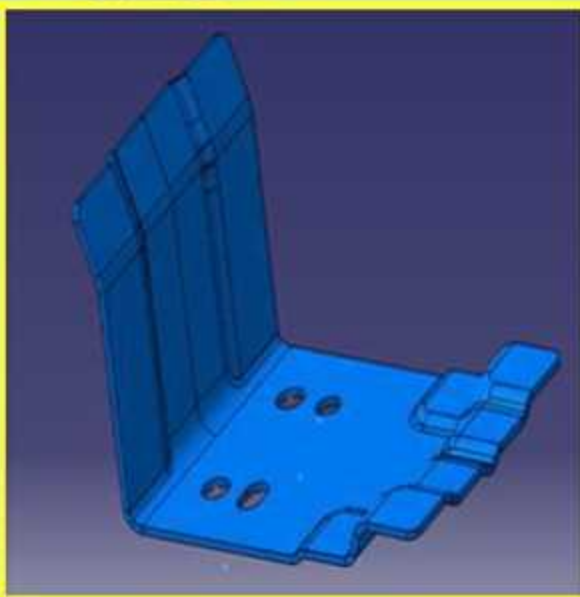
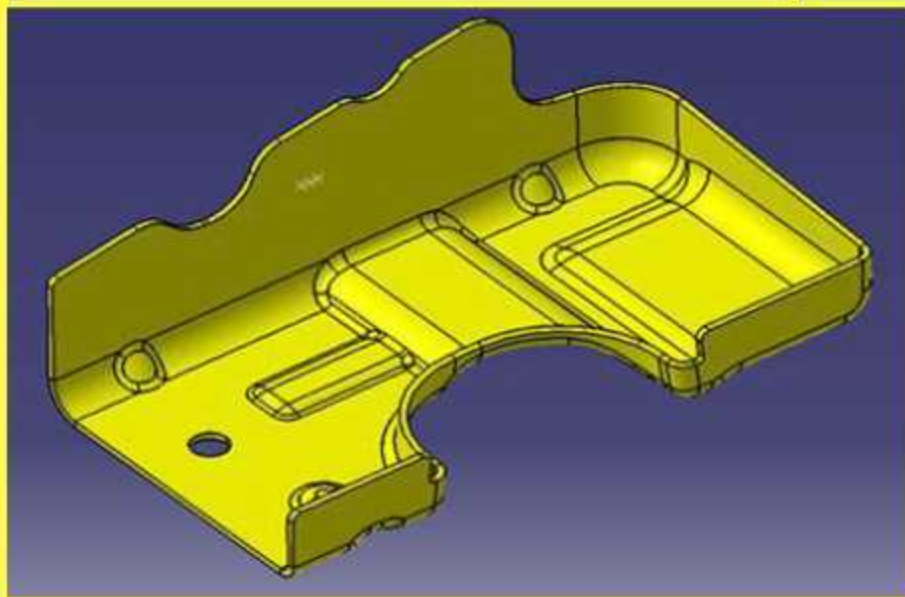
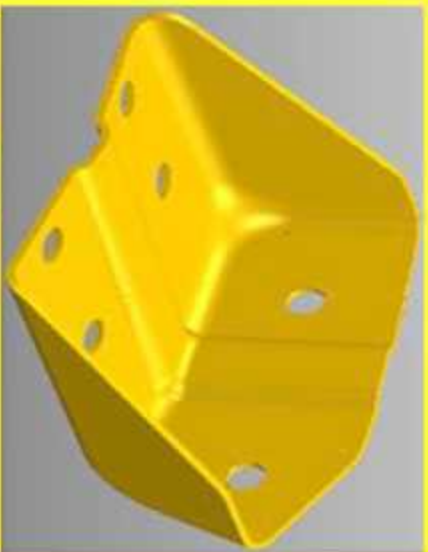
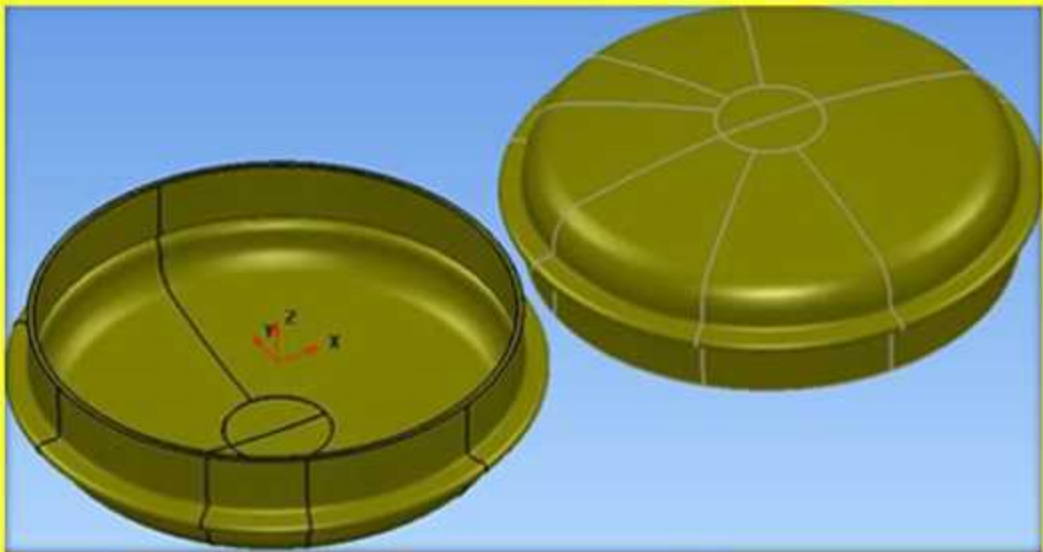
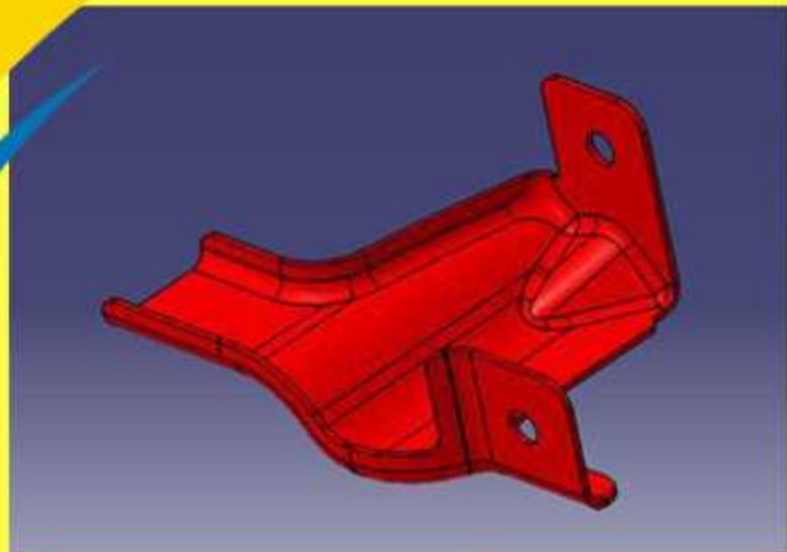
## XYLO ASSEMBLIES



# TOOLINGS FOR FOLLOWING PARTS







# TOOLINGS (DIES & PANEL CHECKERS)



**PRODUCTION  
FACILITY AVAILABLE**

## POWER PRESS

400T

Make- Gill

Bolster Size- 1800X1200

Shut Height- 675-775

Die Coution- 25T (2nos.)



400T pneumatic POWER PRESS



110 & 250T power press ISGEC made

Make	ISGEC		
Tons	T	110T	250T
Bolster Size	mm	1150X710	1450X950
Stroke Length	mm	180(Fixed)	250(Fixed)
Shut Height	mm	270-350	675-775
Die Cushion	T	63	140

# TECHNICAL SPECIFICATIONS OF PRESSES

Sr. No.	Parameters	Unit	TECHNICAL SPECIFICATIONS OF PRESSES					
1	Maximum Capacity	ton	400	250	150(Mech.)	200	GZ-110 T	100
2	Make	-	GILL	ISGEC	GILL	GILL	ISGEC	GILL
3	Frame Type	-	H	C	H	H	C	H
4	Bolster/Bed size (LR × FB)	mm	1800 × 1200	1450×950	715× 755	850×850	1150×710	620×650
5	Ram Area (LR × FB)	mm	1750 × 1100	1350×950	600X480	600×480	620×500	300×400
6	Stroke Length	mm	225 -Fixed	250 -Fixed	12-150	12-175	180 -Fixed	12-150
7	Shut Height	mm	675-775	475-600	300-415	320-480	270-350	165-300
8	Die Cushion Cap-acity at 7Kg/cm <sup>2</sup>	ton	25 ton 2 Nos	140	NA	25	63	25
9	Die Cushion Stroke Length	mm	125	125	NA	80	80	60
10	Die Cushion pad Area	mm	1600 × 800	600× 560	NA	480×490	500× 450	305×530
11	Spare Capacity	%	90%	90%	80%	80%	90%	80%
12	T-slot	mm	300	300	155	250	300	300

# SPOT WELDING GUNS & ASSEMBLY FIXTURES

## Bolero & Xylo







## TOOL ROOM FACILITIES



<b>Make</b>	<b>Pinnacle GSH 7530</b>
<b>Table size</b>	750X300 (mm)
<b>Max. Cross Traverse</b>	330 (mm)
<b>Max. Spindle Centre from Table Surface</b>	625 (mm)
<b>Spindle Speed</b>	1400 (rpm)



VMC & WEDM

STRONG VENDOR  
BASE





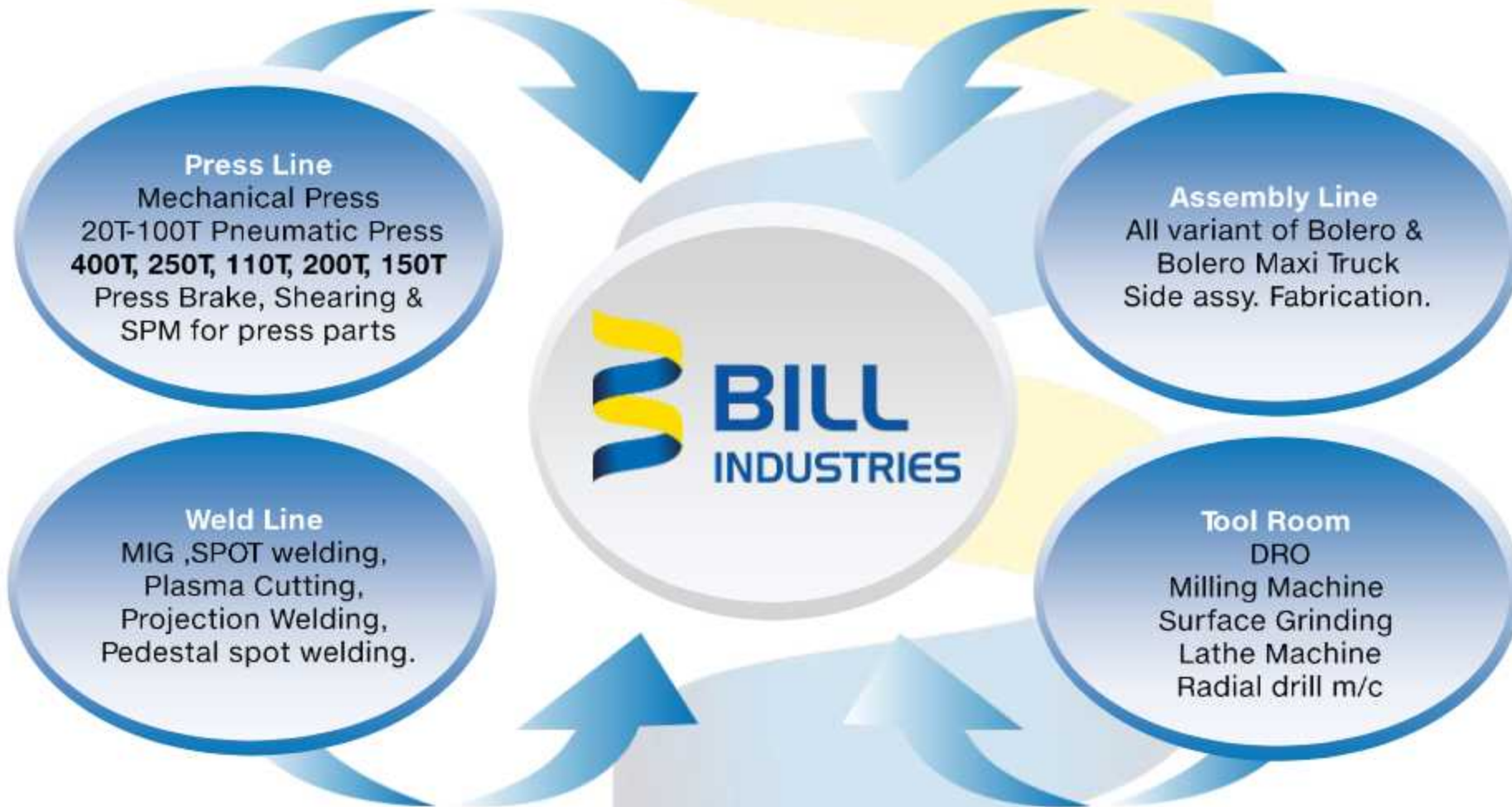
## SPM FOR MACHINING PRESS PART (ID BORING)



## SPM FOR PARTING & FACING OPERATION



## OUR DOMAIN STRENGTH



## OUR FUTURE PROJECTION

Press facility 63T  
and 400T -ISGEC make in 7  
months also planning  
for coil feeder .

Press facility 63T  
and 400T -ISGEC make in 7  
months also planning  
for coil feeder .



Tool Room 3-Axis  
VMC m/c CMM

New construction of press  
shop of 11000 sq. feet.  
Will be Completed  
by June'2017

## MAJOR CLIENTS

Mahindra & Mahindra Ltd	 <b>Mahindra</b>
M&M Trucks and Bus division	 <b>Mahindra</b> Rise.
MCIE Automotive	 <b>CIE Automotive</b>
JBM Auto	<b>JBM</b> Group 
Track Components Ltd	 TRACK COMPONENTS LTD.
Trikaya Coatings Pvt Ltd	 <b>trikaya</b>
Windals Auto Pvt Ltd	 Windals Precision Pvt. Ltd.



# QUALITY SYSTEM ADOPTED

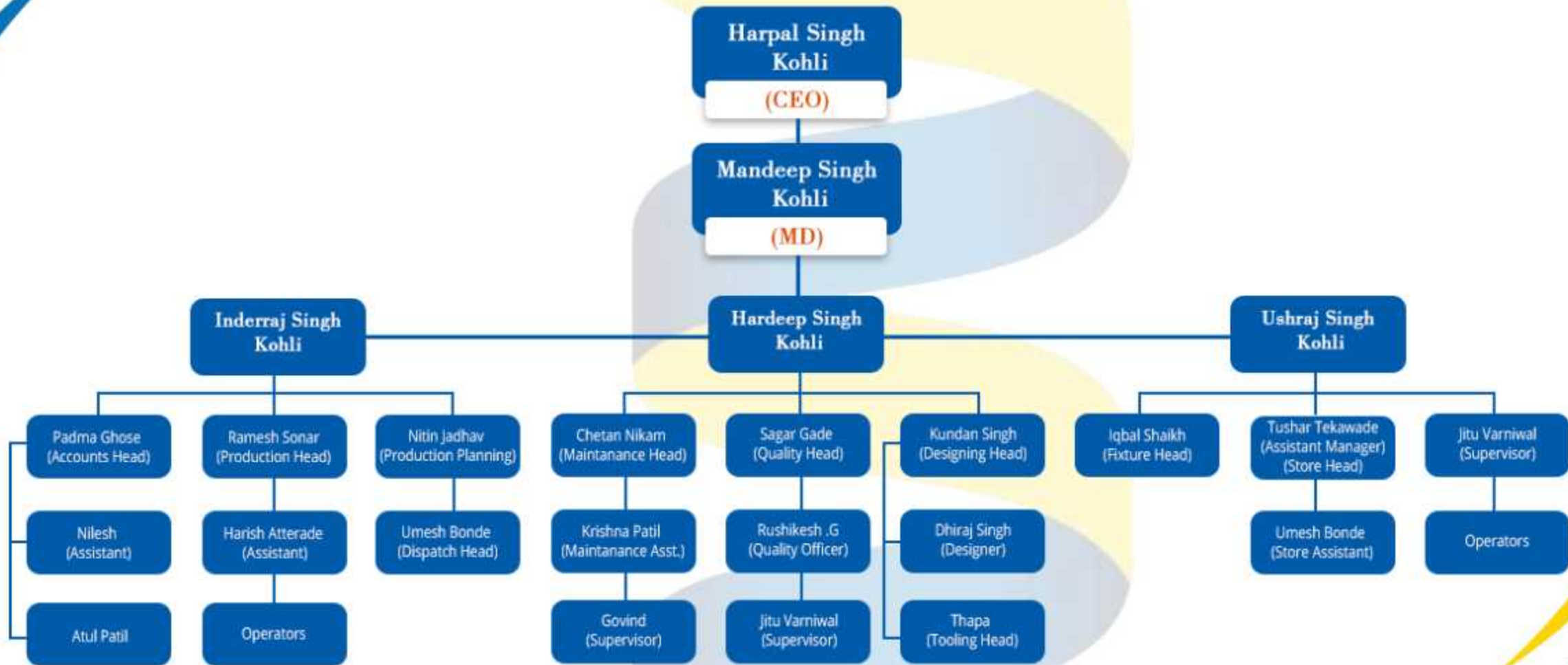


1) ISO/TS 16949 : 2009 Certified Company

2) IRQS Certifying Agency

3) Validity: 14/09/2018.

# OUR MANAGEMENT STRUCTURE





**THANK YOU**